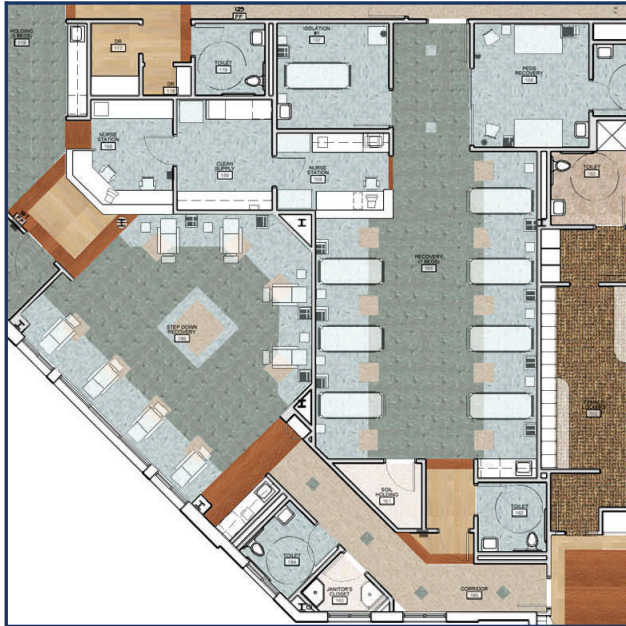




Capital Health
Hamilton • N.J.

Ambulatory Surgery Center



Located within a 45,000 medical facility, this 14,500 sf surgery center is an accommodating facility for Capital Health's expansion into the Hamilton Area. With future expansion in mind, pre-op, recovery and step-down areas were designed to accommodate two more OR's (in addition to the current four) and two Endoscopy rooms. For patient comfort and ambiance, step-down recovery was strategically placed along the perimeter to allow natural light to infiltrate.



BUCKL
ARCHITECTS



"... step-down recovery was strategically placed along the perimeter to allow natural light to infiltrate."

Project Team

Buckl Architects
Lehigh Valley Engineering
WS Cumby

Project Area

14,500 sf

Completion Date

Summer 2005